

Features:

- n Isolated mounting base 4000V~
- n Pressure contact technology with Increased power cycling capability
- n Space and weight saving

Typical Applications

- n Various rectifiers
- n DC supply for PWM inverter

V _{RRM}	Type & Outline
2600V	MDx300-26-415F3
2800V	MDx300-28-415F3
3000V	MDx300-30-415F3
3200V	MDx300-32-415F3
3400V	MDx300-34-415F3
3600V	MDx300-36-415F3
3600V	MD300-36-415F3G

MDx stands for any type of **MDC, MDA, MDK**

SYMBOL	CHARACTERISTIC	TEST CONDITIONS	T _j (°C)	VALUE			UNIT
				Min	Type	Max	
I _{F(AV)}	Mean forward current	180° half sine wave 50Hz Single side cooled, T _c =100°C	150			300	A
I _{F(RMS)}	RMS forward current					471	A
I _{RRM}	Repetitive peak current	at V _{RRM}	150			35	mA
I _{FSM}	Surge forward current	V _R =60%V _{RRM} , t=10ms half sine.	150			10	kA
I ² t	I ² t for fusing coordination					500	10 ³ A ² s
V _{FO}	Threshold voltage		150			0.95	V
r _F	Forward slope resistance					0.70	mΩ
V _{FM}	Peak forward voltage	I _{FM} =900A	25			1.72	V
R _{th(j-c)}	Thermal resistance Junction to case	Single side cooled per chip				0.11	°C/W
R _{th(c-h)}	Thermal resistance case to heatsink	Single side cooled per chip				0.04	°C/W
V _{iso}	Isolation voltage	50Hz, R.M.S, t=1min, I _{iso} :1mA(MAX)		4000			V
F _m	Terminal connection torque(M10)			10		12	N·m
	Mounting torque(M6)			4.5		6.0	N·m
T _{vj}	Junction temperature			-40		150	°C
T _{stg}	Stored temperature			-40		125	°C
W _t	Weight				1260		g
Outline	415F3						

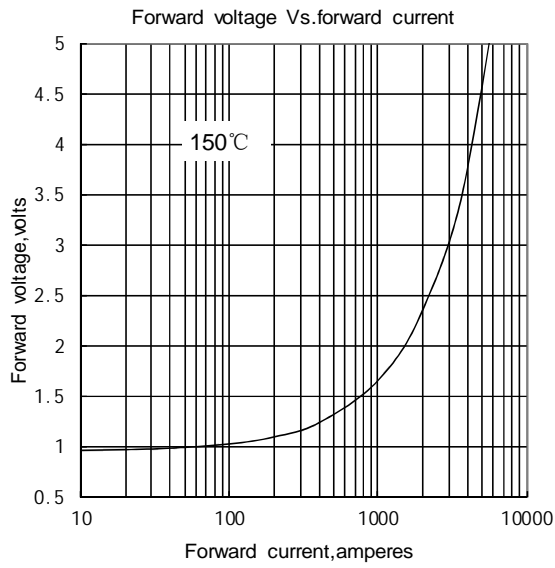


Fig.1

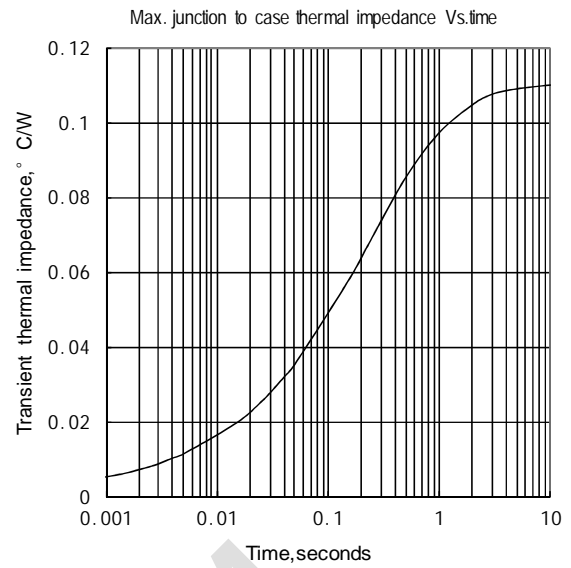


Fig.2

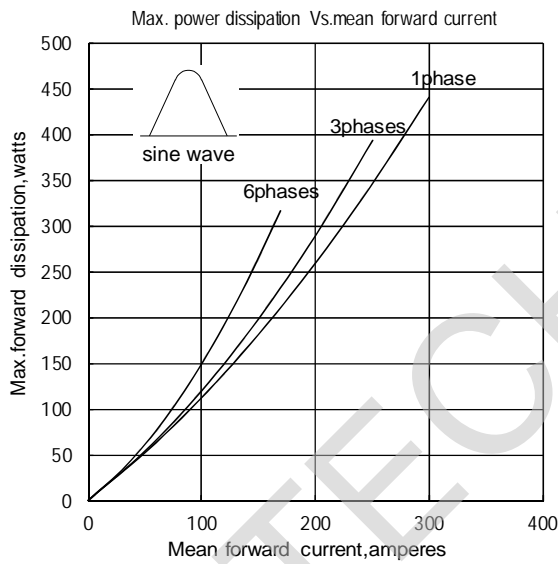


Fig.3

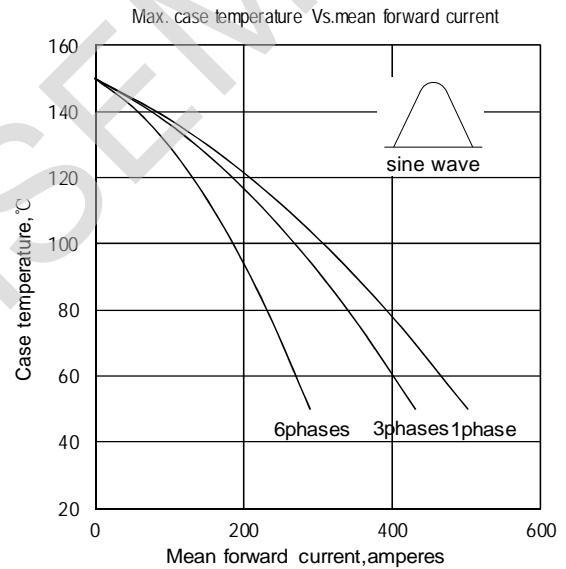


Fig.4

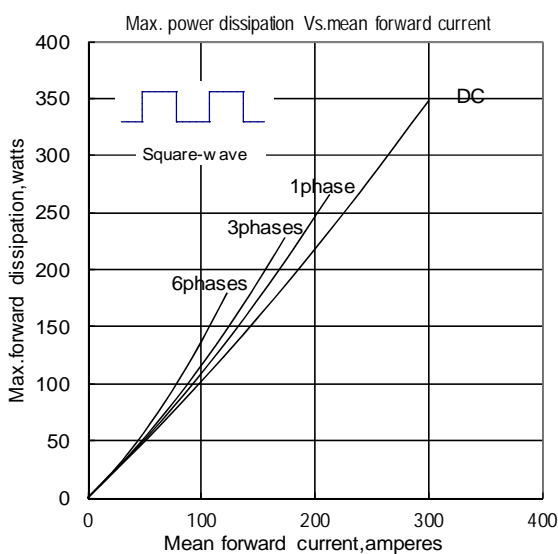


Fig.5

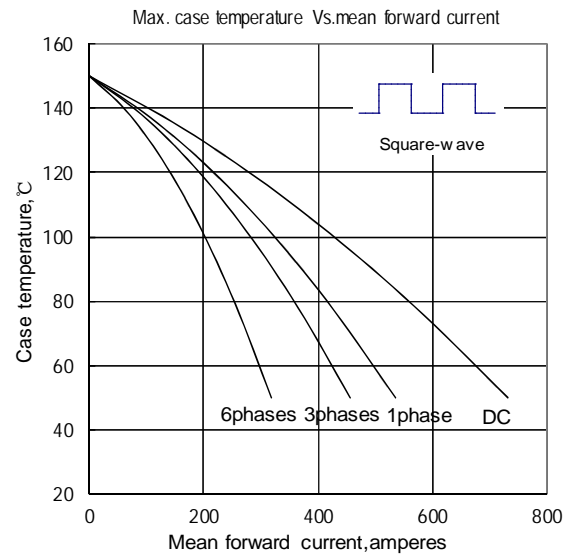


Fig.6

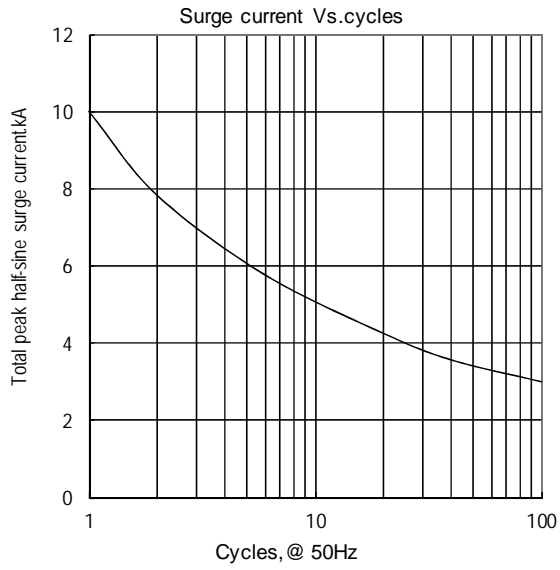


Fig.7

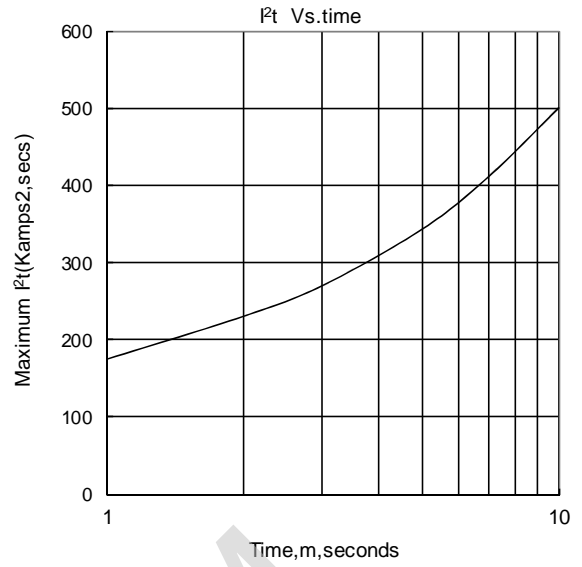
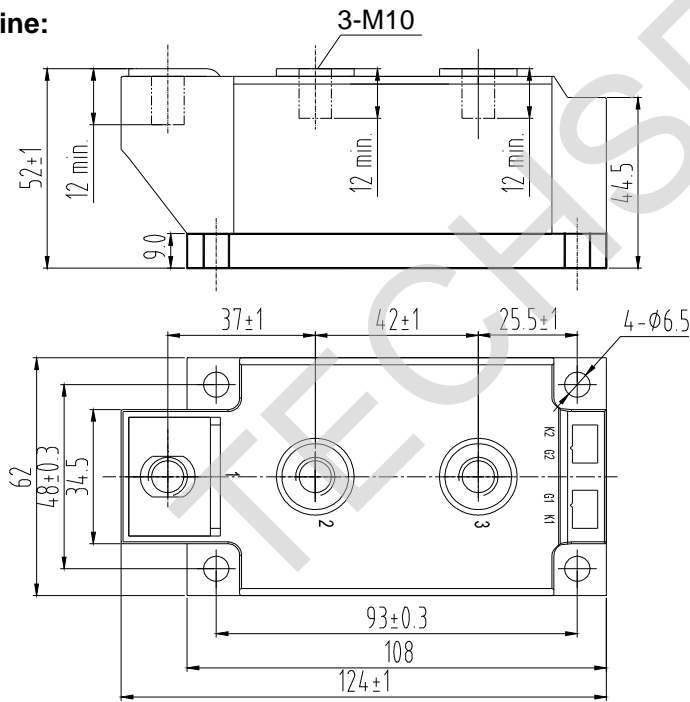


Fig.8

Outline:



Unmarked dimensional tolerance: ±0.5mm

